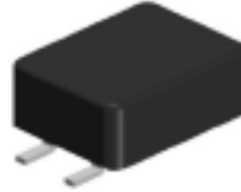


Wire Wound Common Mode Filter

MCS Series Wire Wound Common Choke

Features

- High rated currents, reduced components height
- Qualified to AEC-Q200
- Suitable for reflow soldering
- RoHS-compatible



Applications

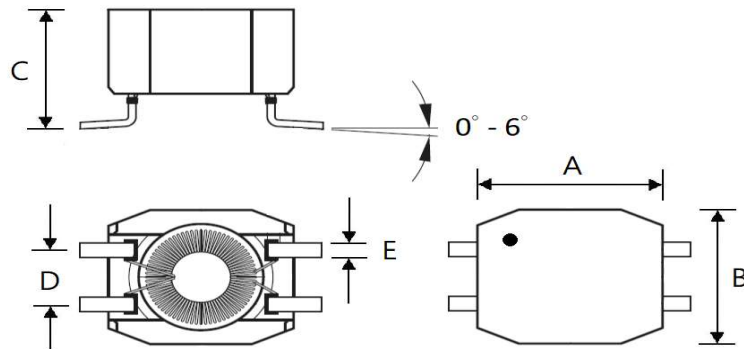
- Automotive applications, e.g. CAN bus
- Industrial applications

Product Identification

MCS - 0705 - 10 1

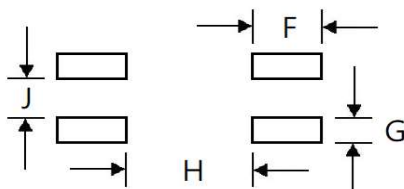
- MCS : SERIES NAME
- 0705 : Dimensions CODE
- 10 : Inductance(μ H)
- 1 : Fixed Decimal Point

Dimensions (mm)



Size	A	B	C	D	E
MCS-0705	7.30±0.3	6.00 max	5.00 max	2.54 ±0.15	0.50 typ.

Recommended Pattern(mm)



Size	F	G	H	J
MCS-0705	2.85	1.2	4.5	1.3

Wire Wound Common Mode Filter

MCS Series Wire Wound Common Choke

Electrical Characteristics

Part No.	Inductance (μ H)	Test Freq.	DCR(Ω) (max)	IDC (A) (max)	Insulation Resistance IR (M Ω) Min.	Hi-pot Max		
						Voltage	Electric current	Time
MCS-0705-110	11 \pm 30%	100KHZ/0.25V	0.12	0.8	100	500VAC	3mA	3S
MCS-0705-250	25 \pm 30%	100KHZ/0.25V	0.13	0.8	100	500VAC	3mA	3S
MCS-0705-510	51 \pm 30%	100KHZ/0.25V	0.14	0.8	100	500VAC	3mA	3S
MCS-0705-101	100 min	1KHZ/0.1V	0.45	0.9	-----	500VAC	3mA	3S
MCS-0705-251	250 \pm 50%	100KHZ/0.05V	0.08	2	100	500VAC	3mA	3S
MCS-0705-471	470 \pm 50%	100KHZ/0.25V	0.18	0.5	100	500VAC	3mA	3S
MCS-0705-102	1000 \pm 50%	100KHZ/0.25V	0.4	0.5	100	500VAC	3mA	3S