



Power chokes- SQI Series

SQI series chokes For High Current Use

Features

1. Shielded construction.
2. High current rating up to DC 50Amp
3. High frequency range up to 1.0MHz
4. Ultra low buzz noise, due to composite construction.

Applications

Excellent for power line DC-DC conversion applications used in power switching, personal computers and other handheld electronic equipment.



Product Identification

SQI 1009- 0R22 M

SQS: SERIES NAME

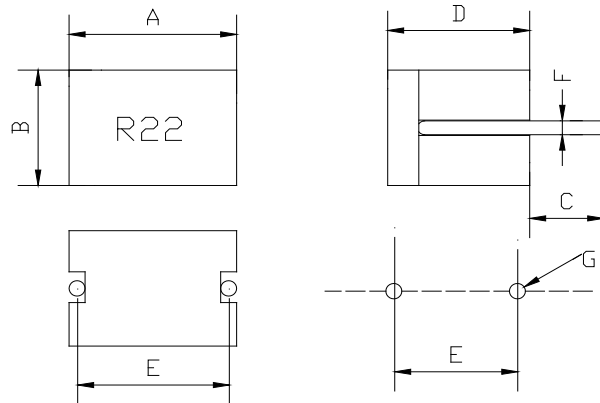
1109: CORE SIZE CODE

T: RI CORE TYPE

1R2: INDUCTANCE CODE.

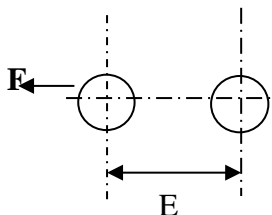
M: TOLERANCE, J=5% K=10% M=20%.

Dimensions (mm)



SERIES	A	B	C	D
SQI1009	10.54max	7.5max	3.5±0.5	8.9max

Recommended PCB layout (mm)



Detail Dimensions and Recommended PCB layout
Per customer specifications

Power chokes- SQI Series

Electrical characteristics

Part Number	L0 Inductance nH $\pm 20\%$ @0A	DCR (m Ω)		Heat Rating Current	Saturation Current
		[Typical]	[Max]	Idc (Amp) [Max]	Isat (Amp) [Max]
SQI1009-0R19M	190	0.49	0.51	40	65
SQI1009-0R22M	220	0.50	0.51	40	65
SQI1009-0R30M	300	0.50	0.84	40	55

Test condition @ 100KHz, 0.1Vrms, 25°C ambient
 # Idc: DC current(A) that will cause an approximate ΔT of 40°C
 # Isat: DC current(A) that will cause Lo to drop approximately 20%
 # Operating Temperature Range: -25°C to +125°C