



SMD Power chokes- SCRH Series

SCRH series chokes For High Energy Storage & Lower Power losses Use

Features

1. Available in magnetically shielded.
2. Low DC resistance.
3. Suitable for large currents.
4. Ideal for a variety of DC - DC converter inductor applications.
5. Available on tape and reel for auto surface mounting.



Applications

- Power supply for VTRs.OA equipment.
- LCD televisions.Notebook PCs.
- Portable communication equipment.
- DC / DC converters, etc.

Product Identification

SCRH 127 - 100 M -PF

SCRH: SERIES NAME

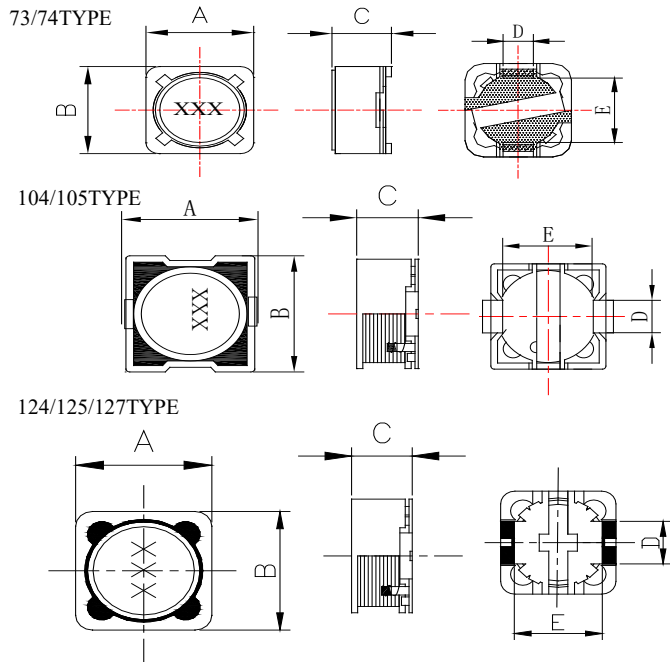
127: DIMENSION SIZE CODE

100: INDUCTANCE CODE.

M: TOLERANCE, J=5% K=10% M=20%.

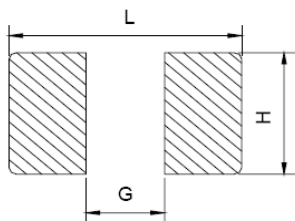
PF:Pb-Free

Dimensions (mm)



SERIES	A	B	C	D	E
SCRH73	7.3±0.5	7.3±0.5	3.5MAX	1.8±0.5	5.4±0.5
SCRH74	7.3±0.5	7.3±0.5	4.5MAX	1.8±0.5	5.4±0.5
SCRH104	10.1±0.5	10.1±0.5	5.0MAX	3.8±0.5	6.0±0.5
SCRH105	10.1±0.5	10.1±0.5	6.0MAX	3.8±0.5	6.0±0.5
SCRH124	12.0±0.5	12.0±0.5	5.0MAX	5.0±0.5	7.6±0.5
SCRH125	12.0±0.5	12.0±0.5	6.0MAX	5.0±0.5	7.6±0.5
SCRH127	12.0±0.5	12.0±0.5	8.0MAX	5.0±0.5	7.6±0.5
SCRH129	12.0±0.5	12.0±0.5	10.0MAX	5.0±0.5	7.6±0.5

RECOMMENDER P.C.B LAYOUT



SERIES	L	H	G
SCRH73	8.0	2.2	4.8
SCRH74	8.0	2.2	4.8
SCRH104	10.1	4.0	5.5
SCRH105	10.1	4.0	5.5
SCRH124	12.6	5.4	7.0
SCRH125	12.6	5.4	7.0
SCRH127	12.6	5.4	7.0
SCRH129	12.6	5.4	7.0



SMD POWER CHOKE-SCRH Series

Electrical Characteristics

Part Number	Inductance (μ H)	Test Frequency (KHz)	DC Resistance (Ω Max)	Rated current (A)Max	Itemp(A) Max
SCRH73-1R2□-PF	1.2	100	0.020	6.00	7.20
SCRH73-1R5□-PF	1.5	100	0.026	6.00	6.50
SCRH73-2R2□-PF	2.2	100	0.032	5.00	5.40
SCRH74-3R3□-PF	3.3	100	0.038	4.50	4.80
SCRH73-4R7□-PF	4.7	100	0.048	3.65	4.00
SCRH73-5R6□-PF	5.6	100	0.051	2.50	3.50
SCRH73-6R8□-PF	6.8	100	0.068	2.40	2.60
SCRH73-8R2□-PF	8.2	100	0.070	1.80	2.10
SCRH73-100□-PF	10	1	0.072	1.68	1.68
SCRH73-120□-PF	12	1	0.098	1.52	1.52
SCRH73-150□-PF	15	1	0.13	1.33	1.46
SCRH73-180□-PF	18	1	0.14	1.2	1.44
SCRH73-220□-PF	22	1	0.19	1.07	1.28
SCRH73-270□-PF	27	1	0.21	0.96	1.26
SCRH73-330□-PF	33	1	0.24	0.91	1.18
SCRH73-390□-PF	39	1	0.32	0.77	1.00
SCRH73-470□-PF	47	1	0.36	0.76	0.91
SCRH73-560□-PF	56	1	0.47	0.68	0.81
SCRH73-680□-PF	68	1	0.52	0.61	0.79
SCRH73-820□-PF	82	1	0.69	0.57	0.74
SCRH73-101□-PF	100	1	0.79	0.5	0.65
SCRH73-121□-PF	120	1	0.89	0.49	0.63
SCRH73-151□-PF	150	1	1.27	0.43	0.55
SCRH73-181□-PF	180	1	1.45	0.39	0.51
SCRH73-221□-PF	220	1	1.65	0.35	0.46
SCRH73-271□-PF	270	1	2.31	0.32	0.45
SCRH73-331□-PF	330	1	2.62	0.28	0.4
SCRH73-391□-PF	390	1	2.94	0.26	0.37
SCRH73-471□-PF	470	1	4.18	0.24	0.34
SCRH73-561□-PF	560	1	4.67	0.22	0.31
SCRH73-681□-PF	680	1	5.73	0.19	0.27
SCRH73-821□-PF	820	1	6.54	0.18	0.25
SCRH73-102□-PF	1000	1	9.44	0.16	0.23

Note:

- (1). All test data is referenced to 25°C ambient.
- (2). Operating Temperature Range-25°C to +105°C.
- (3). DC current(A)that will cause an approximate Δ T of 40°C.
- (4). DC current(A)that will cause Lo to drop approximately 25%.
- (5). □Tolerance of inductance:±10%(K)±20%(M) ±30%(N)



SMD POWER CHOKE-SCRH Series

Electrical Characteristics

Part Number	Inductance (μH)	Test Frequency (KHz)	DC Resistance (ΩMax)	Rated current (A)Max	Itemp(A) Max
SCRH74-1R0□-PF	1.0	100	0.024	7.00	7.80
SCRH74-1R5□-PF	1.5	100	0.026	6.00	7.10
SCRH74-2R2□-PF	2.2	100	0.028	4.20	6.20
SCRH74-3R3□-PF	3.3	100	0.029	4.30	5.30
SCRH74-3R9□-PF	3.9	100	0.032	4.10	4.50
SCRH74-4R7□-PF	4.7	100	0.038	3.00	3.50
SCRH74-5R6□-PF	5.6	100	0.042	2.50	3.00
SCRH74-6R8□-PF	6.8	100	0.045	2.00	3.00
SCRH74-8R2□-PF	8.2	100	0.049	2.00	2.50
SCRH74-100□-PF	10	1	0.049	1.84	2.4
SCRH74-120□-PF	12	1	0.058	1.71	2.21
SCRH74-150□-PF	15	1	0.081	1.47	2.09
SCRH74-180□-PF	18	1	0.091	1.31	1.81
SCRH74-220□-PF	22	1	0.11	1.23	1.73
SCRH74-270□-PF	27	1	0.15	1.12	1.60
SCRH74-330□-PF	33	1	0.17	0.96	1.36
SCRH74-390□-PF	39	1	0.23	0.91	1.26
SCRH74-470□-PF	47	1	0.26	0.88	1.18
SCRH74-560□-PF	56	1	0.35	0.75	1.05
SCRH74-680□-PF	68	1	0.38	0.69	1.04
SCRH74-820□-PF	82	1	0.43	0.61	0.91
SCRH74-101□-PF	100	1	0.61	0.6	0.75
SCRH74-121□-PF	120	1	0.66	0.52	0.7
SCRH74-151□-PF	150	1	0.88	0.46	0.65
SCRH74-181□-PF	180	1	0.98	0.42	0.6
SCRH74-221□-PF	220	1	1.17	0.36	0.55
SCRH74-271□-PF	270	1	1.64	0.34	0.52
SCRH74-331□-PF	330	1	1.86	0.32	0.47
SCRH74-391□-PF	390	1	2.85	0.29	0.42
SCRH74-471□-PF	470	1	3.01	0.26	0.38
SCRH74-561□-PF	560	1	3.62	0.23	0.32
SCRH74-681□-PF	680	1	4.63	0.22	0.3
SCRH74-821□-PF	820	1	5.2	0.2	0.25
SCRH74-102□-PF	1000	1	6.0	0.18	0.22

Note:

- (1). All test data is referenced to 25°C ambient.
- (2). Operating Temperature Range-25°C to +105°C.
- (3). DC current(A)that will cause an approximate ΔT of 40°C.
- (4). DC current(A)that will cause L_o to drop approximately 25%.
- (5). □Tolerance of inductance:±10%(K)±20%(M) ±30%(N)



SMD POWER CHOKE-SCRH Series

Electrical Characteristics

Part Number	Inductance (μ H)	Test Frequency (KHz)	DC Resistance (Ω Max)	Rated current (A)Max	Itemp(A) Max
SCRH104-1R0□-PF	1	100	0.014	8.50	7.00
SCRH104-1R5□-PF	1.5	100	0.017	8.00	5.80
SCRH104-2R2□-PF	2.2	100	0.024	7.50	5.20
SCRH104-3R3□-PF	3.3	100	0.029	7.00	4.68
SCRH104-4R7□-PF	4.7	100	0.032	6.00	4.22
SCRH104-6R8□-PF	6.8	100	0.044	5.00	3.60
SCRH104-100□-PF	10	100	0.05	2.40	3.40
SCRH104-120□-PF	12	100	0.054	2.25	3.00
SCRH104-150□-PF	15	100	0.069	2.00	2.70
SCRH104-180□-PF	18	100	0.084	1.80	2.40
SCRH104-220□-PF	22	100	0.094	1.65	2.16
SCRH104-270□-PF	27	100	0.11	1.45	1.95
SCRH104-330□-PF	33	100	0.15	1.35	1.76
SCRH104-390□-PF	39	100	0.17	1.20	1.59
SCRH104-470□-PF	47	100	0.21	1.10	1.52
SCRH104-560□-PF	56	100	0.23	1.00	1.40
SCRH104-680□-PF	68	100	0.29	0.93	1.17
SCRH104-820□-PF	82	100	0.36	0.84	1.06
SCRH104-101□-PF	100	100	0.41	0.76	0.96
SCRH104-121□-PF	120	100	0.45	0.70	0.87
SCRH104-151□-PF	150	100	0.64	0.63	0.79
SCRH104-181□-PF	180	100	0.84	0.57	0.72
SCRH104-221□-PF	220	100	0.86	0.52	0.65
SCRH104-271□-PF	270	100	1.07	0.47	0.59
SCRH104-331□-PF	330	100	1.37	0.43	0.54
SCRH104-391□-PF	390	100	1.55	0.39	0.49
SCRH104-471□-PF	470	100	1.74	0.36	0.44

Note:

- (1). All test data is referenced to 25°C ambient.
- (2). Operating Temperature Range-25°C to +105°C.
- (3). DC current(A)that will cause an approximate Δ T of 40°C.
- (4). DC current(A)that will cause Lo to drop approximately 25%.
- (5). □Tolerance of inductance:±10%(K)±20%(M)±30%(N)



SMD POWER CHOKE-SCRH Series

Electrical Characteristics

Part Number	Inductance (μ H)	Test Frequency (KHz)	DC Resistance (Ω Max)	Rated current (A)Max	Itemp(A) Max
SCRH105-1R0□-PF	1	100	0.017	9.00	7.00
SCRH105-2R5□-PF	2.5	100	0.02	7.50	5.90
SCRH105-3R3□-PF	3.3	100	0.025	7.20	4.70
SCRH105-4R7□-PF	4.7	100	0.027	7.00	4.21
SCRH105-5R6□-PF	5.6	100	0.045	6.50	3.59
SCRH105-6R8□-PF	6.8	100	0.054	6.00	3.23
SCRH105-8R2□-PF	8.2	100	0.056	5.40	2.90
SCRH105-100□-PF	10	100	0.069	4.80	2.75
SCRH105-120□-PF	12	100	0.078	4.20	2.61
SCRH105-150□-PF	15	100	0.084	3.70	2.32
SCRH105-180□-PF	18	100	0.100	3.40	2.22
SCRH105-220□-PF	22	100	0.125	2.80	2.10
SCRH105-270□-PF	27	100	0.156	2.60	1.90
SCRH105-330□-PF	33	100	0.18	2.40	1.80
SCRH105-390□-PF	39	100	0.22	2.30	1.53
SCRH105-470□-PF	47	100	0.24	2.10	1.37
SCRH105-560□-PF	56	100	0.27	1.82	1.23
SCRH105-680□-PF	68	100	0.32	1.65	1.16
SCRH105-820□-PF	82	100	0.38	1.50	1.10
SCRH105-101□-PF	100	100	0.47	1.40	1.04
SCRH105-121□-PF	120	100	0.56	1.23	0.98
SCRH105-151□-PF	150	100	0.78	1.15	0.88
SCRH105-181□-PF	180	100	1.05	1.00	0.70
SCRH105-221□-PF	220	100	1.32	0.80	0.63
SCRH105-271□-PF	270	100	1.5	0.70	0.60
SCRH105-331□-PF	330	100	1.92	0.62	0.57
SCRH105-391□-PF	390	100	2.2	0.58	0.50
SCRH105-471□-PF	470	100	2.6	0.55	0.45

Note:

- (1). All test data is referenced to 25°C ambient.
- (2). Operating Temperature Range-25°C to +105°C.
- (3). DC current(A)that will cause an approximate Δ T of 40°C.
- (4). DC current(A)that will cause Lo to drop approximately 25%.
- (5). □Tolerance of inductance:±10%(K)±20%(M) ±30%(N)


SMD POWER CHOKE-SCRH Series
Electrical Characteristics

Part Number	Inductance (μ H)	Test Frequency (KHz)	DC Resistance (Ω Max)	Rated current (A)Max	Itemp(A) Max
SCRH124-1R0□-PF	1.0	100	0.011	8.00	9.00
SCRH124-1R5□-PF	1.5	100	0.014	7.50	8.20
SCRH124-2R2□-PF	2.2	100	0.014	7.00	7.50
SCRH124-3R9□-PF	3.9	100	0.015	6.50	6.80
SCRH124-4R7□-PF	4.7	100	0.018	5.70	5.40
SCRH124-6R8□-PF	6.8	100	0.023	4.90	4.80
SCRH124-8R2□-PF	8.2	100	0.026	4.60	4.40
SCRH124-100□-PF	10	100	0.028	4.50	4.10
SCRH124-120□-PF	12	100	0.038	4.00	3.90
SCRH124-150□-PF	15	100	0.05	3.20	3.50
SCRH124-180□-PF	18	100	0.057	3.10	3.10
SCRH124-220□-PF	22	100	0.066	2.90	3.00
SCRH124-270□-PF	27	100	0.08	2.80	2.70
SCRH124-330□-PF	33	100	0.097	2.70	2.43
SCRH124-390□-PF	39	100	0.132	2.10	2.07
SCRH124-470□-PF	47	100	0.16	1.90	1.87
SCRH124-560□-PF	56	100	0.19	1.80	1.77
SCRH124-680□-PF	68	100	0.22	1.50	1.60
SCRH124-820□-PF	82	100	0.26	1.30	1.44
SCRH124-101□-PF	100	100	0.308	1.20	1.36
SCRH124-121□-PF	120	100	0.38	1.10	1.23
SCRH124-151□-PF	150	100	0.53	0.95	1.16
SCRH124-181□-PF	180	100	0.62	0.85	1.05
SCRH124-221□-PF	220	100	0.7	0.80	0.95
SCRH124-271□-PF	270	100	0.87	0.60	0.86
SCRH124-331□-PF	330	100	0.99	0.50	0.78

Note:

- (1). All test data is referenced to 25°C ambient.
- (2). Operating Temperature Range-25°C to +105°C.
- (3). DC current(A)that will cause an approximate Δ T of 40°C.
- (4). DC current(A)that will cause Lo to drop approximately 25%.
- (5). □Tolerance of inductance:±10%(K)±20%(M) ±30%(N)



SMD POWER CHOKE-SCRH Series

Electrical Characteristics

Part Number	Inductance (μ H)	Test Frequency (KHz)	DC Resistance (Ω Max)	Rated current (A)Max	Itemp(A) Max
SCRH125-1R0□-PF	1.0	100	0.011	12.00	12.00
SCRH125-1R5□-PF	1.5	100	0.014	10.00	10.00
SCRH125-2R2□-PF	2.2	100	0.014	8.00	8.20
SCRH125-3R3□-PF	3.3	100	0.017	7.00	7.80
SCRH125-3R9□-PF	3.9	100	0.017	7.00	7.50
SCRH125-4R7□-PF	4.7	100	0.019	6.00	6.80
SCRH125-5R6□-PF	5.6	100	0.020	6.00	6.50
SCRH125-6R8□-PF	6.8	100	0.022	5.50	6.20
SCRH125-8R2□-PF	8.2	100	0.024	4.00	5.80
SCRH125-100□-PF	10	1	0.025	4.00	5.50
SCRH125-120□-PF	12	1	0.027	3.50	5.22
SCRH125-150□-PF	15	1	0.03	3.30	4.69
SCRH125-180□-PF	18	1	0.034	3.00	4.22
SCRH125-220□-PF	22	1	0.036	2.80	4.00
SCRH125-270□-PF	27	1	0.051	2.30	3.24
SCRH125-330□-PF	33	1	0.057	2.10	3.07
SCRH125-390□-PF	39	1	0.068	2.00	2.76
SCRH125-470□-PF	47	1	0.075	1.80	2.48
SCRH125-560□-PF	56	1	0.11	1.70	2.23
SCRH125-680□-PF	68	1	0.12	1.50	2.00
SCRH125-820□-PF	82	1	0.14	1.40	1.80
SCRH125-101□-PF	100	1	0.16	1.30	1.70
SCRH125-121□-PF	120	1	0.17	1.10	1.60
SCRH125-151□-PF	150	1	0.23	1.00	1.52
SCRH125-181□-PF	180	1	0.29	0.90	1.44
SCRH125-221□-PF	220	1	0.4	0.80	1.29
SCRH125-271□-PF	270	1	0.46	0.75	1.16
SCRH125-331□-PF	330	1	0.51	0.68	1.04
SCRH125-391□-PF	390	1	0.69	0.65	0.93
SCRH125-471□-PF	470	1	0.77	0.58	0.83
SCRH125-561□-PF	560	1	0.86	0.54	0.74
SCRH125-681□-PF	680	1	1.2	0.48	0.66
SCRH125-821□-PF	820	1	1.34	0.43	0.59
SCRH125-102□-PF	1000	1	1.53	0.40	0.53

Note:

- (1). All test data is referenced to 25°C ambient.
- (2). Operating Temperature Range-25°C to +105°C.
- (3). DC current(A)that will cause an approximate Δ T of 40°C.
- (4). DC current(A)that will cause Lo to drop approximately 25%.
- (5). □Tolerance of inductance:±10%(K)±20%(M)±30%(N)


SMD POWER CHOKE-SCRH Series
Electrical Characteristics

Part Number	Inductance (μ H)	Test Frequency (KHz)	DC Resistance (Ω Max)	Rated current (A)Max	Itemp(A) Max
SCRH127-1R2□-PF	1.2	100	0.005	18.0	15.0
SCRH127-1R5□-PF	1.5	100	0.007	16.0	13.5
SCRH127-2R2□-PF	2.2	100	0.01	15.0	12.8
SCRH127-3R3□-PF	3.3	100	0.012	13.0	9.2
SCRH127-4R7□-PF	4.7	100	0.015	12.0	7.8
SCRH127-6R1□-PF	6.1	100	0.018	6.6	6.8
SCRH127-7R6□-PF	7.6	100	0.020	5.9	6.3
SCRH127-8R2□-PF	8.2	100	0.020	5.8	6.0
SCRH127-100□-PF	10	1	0.0216	5.4	5.7
SCRH127-120□-PF	12	1	0.0243	4.9	5.1
SCRH127-150□-PF	15	1	0.027	4.5	4.85
SCRH127-180□-PF	18	1	0.0392	3.9	4.36
SCRH127-220□-PF	22	1	0.0432	3.6	4
SCRH127-270□-PF	27	1	0.0459	3.4	3.6
SCRH127-330□-PF	33	1	0.0648	3	3.25
SCRH127-390□-PF	39	1	0.0729	2.75	2.91
SCRH127-470□-PF	47	1	0.1	2.5	2.62
SCRH127-560□-PF	56	1	0.11	2.35	2.35
SCRH127-680□-PF	68	1	0.14	2.1	2.23
SCRH127-820□-PF	82	1	0.16	1.95	2
SCRH127-101□-PF	100	1	0.22	1.7	1.8
SCRH127-121□-PF	120	1	0.25	1.6	1.7
SCRH127-151□-PF	150	1	0.28	1.42	1.6
SCRH127-181□-PF	180	1	0.35	1.3	1.52
SCRH127-221□-PF	220	1	0.39	1.16	1.44
SCRH127-271□-PF	270	1	0.56	1.06	1.36
SCRH127-331□-PF	330	1	0.64	0.95	1.22
SCRH127-391□-PF	390	1	0.7	0.88	1.03
SCRH127-471□-PF	470	1	0.98	0.79	0.92
SCRH127-561□-PF	560	1	1.07	0.73	0.83
SCRH127-681□-PF	680	1	1.46	0.67	0.75
SCRH127-821□-PF	820	1	1.64	0.6	0.68
SCRH127-102□-PF	1000	1	182	0.55	0.61

Note:

- (1). All test data is referenced to 25°C ambient.
- (2). Operating Temperature Range-25°C to +105°C.
- (3). DC current(A)that will cause an approximate Δ T of 40°C.
- (4). DC current(A)that will cause Lo to drop approximately 25%.


SMD POWER CHOKE-SCRH Series
Electrical Characteristics

Part Number	Inductance (μH)	Test Frequency (KHz)	DC Resistance (ΩMax)	Rated current (A)Max	Itemp(A) Max
SCRH129-3R3□-PF	3.3	100	0.012	8.0	14.0
SCRH129-4R7□-PF	4.7	100	0.013	7.5	13.5
SCRH129-6R8□-PF	6.8	100	0.014	7.0	12.8
SCRH129-8R2□-PF	8.2	100	0.015	6.8	12.0
SCRH129-100□-PF	10	1	0.016	6.5	11.5
SCRH129-120□-PF	12	1	0.020	6.0	10.0
SCRH129-150□-PF	15	1	0.022	5.7	9.5
SCRH129-180□-PF	18	1	0.025	5.0	8.5
SCRH129-220□-PF	22	1	0.030	4.5	8.0
SCRH129-330□-PF	33	1	0.039	3.8	6.5
SCRH129-470□-PF	47	1	0.056	3.0	5.5
SCRH129-680□-PF	68	1	0.080	2.8	4.5
SCRH129-820□-PF	82	1	0.115	2.6	4.0
SCRH129-101□-PF	100	1	0.125	2.4	3.6
SCRH129-121□-PF	120	1	0.135	2.2	3.3
SCRH129-151□-PF	150	1	0.185	1.8	2.9
SCRH129-181□-PF	180	1	0.205	1.7	2.6
SCRH129-221□-PF	220	1	0.225	1.5	2.4
SCRH129-331□-PF	330	1	0.340	1.2	2.2
SCRH129-471□-PF	470	1	0.510	1.0	2.0
SCRH129-681□-PF	680	1	0.630	0.9	1.8
SCRH129-821□-PF	820	1	0.850	0.9	1.7
SCRH129-102□-PF	1000	1	1.000	0.8	1.6
SCRH129-122□-PF	1200	1	1.300	0.7	1.5
SCRH129-152□-PF	1500	1	1.450	0.7	1.4
SCRH129-182□-PF	1800	1	1.630	0.6	1.4
SCRH129-221□-PF	2200	1	2.200	0.6	1.2
SCRH129-331□-PF	3300	1	3.200	0.5	1.0
SCRH129-471□-PF	4700	1	3.930	0.4	0.9

Note:

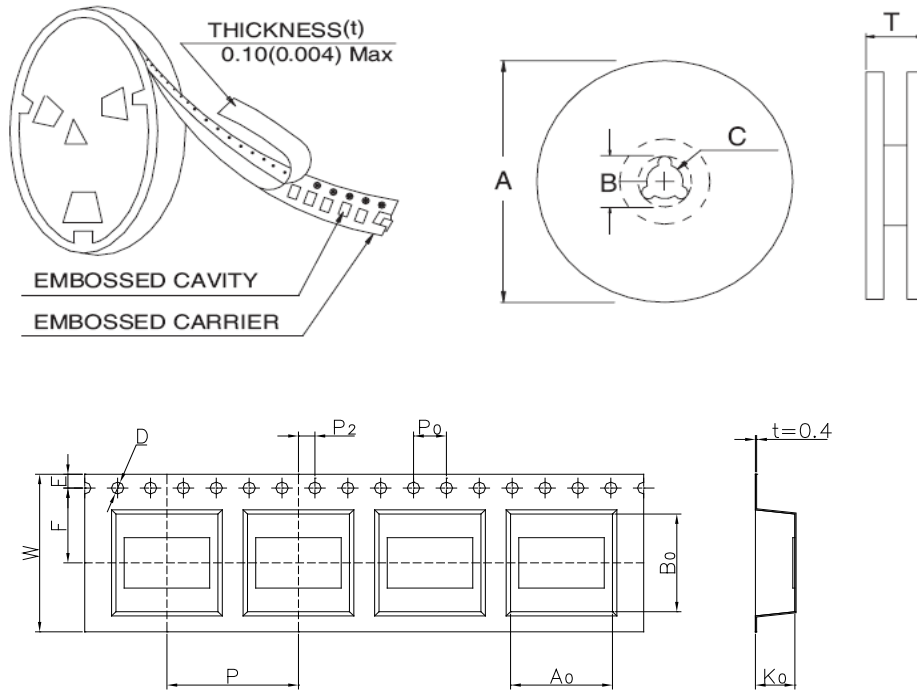
- (1). All test data is referenced to 25°C ambient.
- (2). Operating Temperature Range-25°C to +105°C.
- (3). DC current(A)that will cause an approximate ΔT of 40°C.
- (4). DC current(A)that will cause L_o to drop approximately 25%.
- (5). □Tolerance of inductance:±10%(K)±20%(M)±30%(N)



SMD POWER CHOKE-SCRH Series

PACKAGING

1. Configuration.



2. Dimension in mm

TYPE	A	B	C	T
12mm	330	100	21±0.8	16.4
16mm	330	100	21±0.8	20.4
24mm	330	100	21±0.8	28.4
32mm	330	100	21±0.8	36.4

TYPE	Ao(mm)	Bo(mm)	Ko(mm)	W(mm)	P(mm)	PCS/REEL
SCRH73	7.85±0.1	7.85±0.1	3.5±0.1	16±0.3	12±0.1	1000
SCRH74	7.85±0.1	7.85±0.1	4.5±0.1	16±0.3	12±0.1	1000
SCRH104	9.2±0.1	10.1±0.1	5.0±0.1	24±0.3	16±0.1	500
SCRH105	9.2±0.1	10.1±0.1	6.0±0.1	24±0.3	16±0.1	500
SCRH124	12.6±0.1	12.6±0.1	5.2±0.1	24±0.3	16±0.1	500
SCRH125	12.6±0.1	12.6±0.1	6.2±0.1	24±0.3	16±0.1	500
SCRH127	12.6±0.1	12.6±0.1	8.2±0.1	24±0.3	16±0.1	500
SCRH129	12.6±0.1	12.6±0.1	10.2±0.1	24±0.3	16±0.1	300