



SMD Power chokes- SCRH -B Series

SCRH-B series chokes For High Energy Storage & Lower Power losses Use

Features

1. Available in magnetically shielded.
2. Low DC resistance.
3. Suitable for large currents.
4. Ideal for a variety of DC - DC converter inductor applications.
5. Available on tape and reel for auto surface mounting.



Applications

Power supply for VTRs.OA equipment.
LCD televisions.Notebook PCs.
Portable communication equipment.
DC / DC converters, etc.

Product Identification

SCRH 127B – 100 M -PF

SCRH: SERIES NAME

127: DIMENSION SIZE CODE

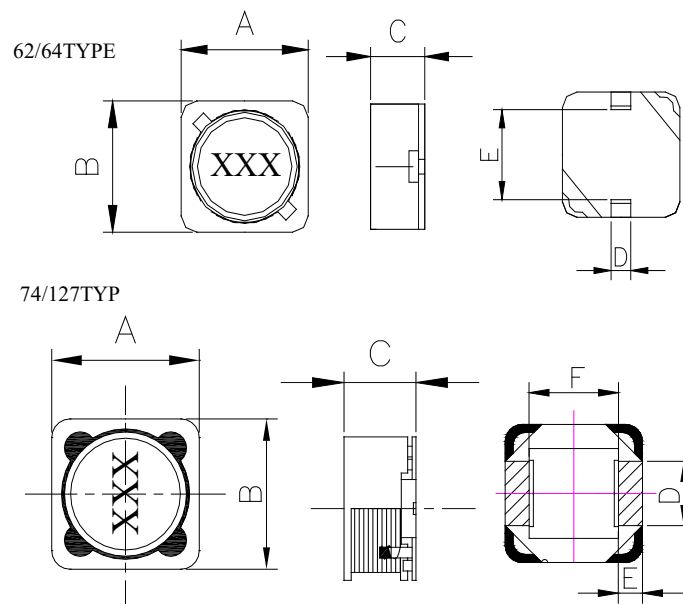
B: BASE TYPE.

100: INDUCTANCE CODE.

M: TOLERANCE, J=5% K=10% M=20%.

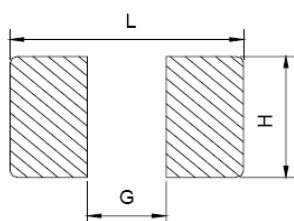
PF:Pb-Free

Dimensions (mm)



SERIES	A	B	C	D	E	F
SCRH62B	6.2 ± 0.3	5.9 ± 0.3	3.2MAX	1.5±0.3	2.8±0.5	
SCRH64B	6.2 ± 0.3	5.9 ± 0.3	5.2MAX	1.5±0.3	2.8±0.5	
SCRH73B	7.3±0.5	7.3±0.5	3.5MAX	1.5±0.5	4.0±0.5	
SCRH74B	7.3±0.5	7.3±0.5	4.5MAX	1.5±0.5	4.0±0.5	
SCRH124B	12.0±0.5	12.0±0.5	5.0MAX	4.8±0.5	2.5REF	7.0±0.5
SCRH125B	12.0±0.5	12.0±0.5	6.0MAX	4.8±0.5	2.5REF	7.0±0.5
SCRH127B	12.0±0.5	12.0±0.5	8.0MAX	4.8±0.5	2.5REF	7.0±0.5

RECOMMENDER P.C.B LAYOUT



SERIES	L	H	G
SCRH62B	6.5	2.0	2.5
SCRH64B	6.5	2.0	2.5
SCRH73B	8.0	2.0	3.6
SCRH74B	8.0	2.0	3.6
SCRH124B	12.5	5.4	6.5
SCRH125B	12.5	5.4	6.5
SCRH127B	12.5	5.4	6.5



SMD Power chokes- SCRH -B Series

Electrical Characteristics

Part Number	Inductance (μ H)	Test Frequency (KHz)	DC Resistance (Ω Max)	Rated current (A)Max	Itemp(A) Max
SCRH62B-2R9□-PF	2.9	100	0.068	1.94	2.50
SCRH62B-4R0□-PF	4	100	0.08	1.63	2.00
SCRH62B-5R5□-PF	5.5	100	0.096	1.40	1.80
SCRH62B-6R3□-PF	6.3	100	0.1	1.30	1.62
SCRH62B-7R0□-PF	7	100	0.11	1.22	1.53
SCRH62B-8R2□-PF	8.2	100	0.12	1.15	1.46
SCRH62B-100□-PF	10	100	0.15	1.10	1.38
SCRH62B-120□-PF	12	100	0.2	1.00	1.24
SCRH62B-150□-PF	15	100	0.23	0.90	1.17
SCRH62B-180□-PF	18	100	0.27	0.80	1.05
SCRH62B-220□-PF	22	100	0.34	0.74	0.99
SCRH62B-270□-PF	27	100	0.38	0.66	0.89
SCRH62B-330□-PF	33	100	0.45	0.59	0.84
SCRH62B-390□-PF	39	100	0.49	0.54	0.79
SCRH62B-470□-PF	47	100	0.69	0.50	0.75

Note:

- (1). All test data is referenced to 25°C ambient.
- (2). Operating Temperature Range-25°C to +105°C.
- (3). DC current(A)that will cause an approximate Δ T of 40°C.
- (4). DC current(A)that will cause Lo to drop approximately 25%.
- (5). □Tolerance of inductance:±10%(K)±20%(M)±30%(N)



SMD Power chokes- SCRH -B Series

Electrical Characteristics

Part Number	Inductance (μ H)	Test Frequency (KHz)	DC Resistance (Ω Max)	Rated current (A)Max	Itemp(A) Max
SCRH64B-100□-PF	10	1	0.12	1.35	2.00
SCRH64B-120□-PF	12	1	0.13	1.22	1.80
SCRH64B-150□-PF	15	1	0.18	1.11	1.50
SCRH64B-180□-PF	18	1	0.24	1.02	1.45
SCRH64B-220□-PF	22	1	0.27	0.91	1.30
SCRH64B-270□-PF	27	1	0.3	0.82	1.17
SCRH64B-330□-PF	33	1	0.33	0.74	1.05
SCRH64B-390□-PF	39	1	0.37	0.69	0.95
SCRH64B-470□-PF	47	1	0.52	0.62	0.90
SCRH64B-560□-PF	56	1	0.56	0.58	0.85
SCRH64B-680□-PF	68	1	0.63	0.51	0.80
SCRH64B-820□-PF	82	1	0.71	0.46	0.72
SCRH64B-101□-PF	100	1	1.03	0.42	0.64
SCRH64B-121□-PF	120	1	1.15	0.38	0.57
SCRH64B-151□-PF	150	1	1.68	0.35	0.51
SCRH64B-181□-PF	180	1	1.87	0.32	0.48
SCRH64B-221□-PF	220	1	2.08	0.29	0.46
SCRH64B-271□-PF	270	1	2.37	0.26	0.45
SCRH64B-331□-PF	330	1	2.67	0.23	0.42
SCRH64B-391□-PF	390	1	2.94	0.22	0.40
SCRH64B-471□-PF	470	1	3.93	0.20	0.38
SCRH64B-561□-PF	560	1	5.43	0.18	0.36
SCRH64B-681□-PF	680	1	7.32	0.17	0.30
SCRH64B-821□-PF	820	1	8.24	0.15	0.24
SCRH64B-102□-PF	1000	1	9.26	0.14	0.21

Note:

- (1). All test data is referenced to 25°C ambient.
- (2). Operating Temperature Range-25°C to +105°C.
- (3). DC current(A)that will cause an approximate Δ T of 40°C.
- (4). DC current(A)that will cause Lo to drop approximately 25%.
- (5). □Tolerance of inductance:±10%(K)±20%(M) ±30%(N)



SMD Power chokes- SCRH -B Series

Electrical Characteristics

Part Number	Inductance (μ H)	Test Frequency (KHz)	DC Resistance (Ω Max)	Rated current (A)Max	Itemp(A) Max
SCRH73B-100□-PF	10	1	0.072	1.68	1.68
SCRH73B-120□-PF	12	1	0.098	1.52	1.52
SCRH73B-150□-PF	15	1	0.13	1.33	1.46
SCRH73B-180□-PF	18	1	0.14	1.2	1.44
SCRH73B-220□-PF	22	1	0.19	1.07	1.28
SCRH73B-270□-PF	27	1	0.21	0.96	1.26
SCRH73B-330□-PF	33	1	0.24	0.91	1.18
SCRH73B-390□-PF	39	1	0.32	0.77	1.00
SCRH73B-470□-PF	47	1	0.36	0.76	0.91
SCRH73B-560□-PF	56	1	0.47	0.68	0.81
SCRH73B-680□-PF	68	1	0.52	0.61	0.79
SCRH73B-820□-PF	82	1	0.69	0.57	0.74
SCRH73B-101□-PF	100	1	0.79	0.5	0.65
SCRH73B-121□-PF	120	1	0.89	0.49	0.63
SCRH73B-151□-PF	150	1	1.27	0.43	0.55
SCRH73B-181□-PF	180	1	1.45	0.39	0.51
SCRH73B-221□-PF	220	1	1.65	0.35	0.46
SCRH73B-271□-PF	270	1	2.31	0.32	0.45
SCRH73B-331□-PF	330	1	2.62	0.28	0.4
SCRH73B-391□-PF	390	1	2.94	0.26	0.37
SCRH73B-471□-PF	470	1	4.18	0.24	0.34
SCRH73B-561□-PF	560	1	4.67	0.22	0.31
SCRH73B-681□-PF	680	1	5.73	0.19	0.27
SCRH73B-821□-PF	820	1	6.54	0.18	0.25
SCRH73B-102□-PF	1000	1	9.44	0.16	0.23

Note:

- (1). All test data is referenced to 25°C ambient.
- (2). Operating Temperature Range-25°C to +105°C.
- (3). DC current(A)that will cause an approximate ΔT of 40°C.
- (4). DC current(A)that will cause L_o to drop approximately 25%.
- (5). □Tolerance of inductance:±10%(K)±20%(M) ±30%(N)



SMD Power chokes- SCRH -B Series

Electrical Characteristics

Part Number	Inductance (μ H)	Test Frequency (KHz)	DC Resistance (Ω Max)	Rated current (A)Max	Itemp(A) Max
SCRH74B-100□-PF	10	1	0.049	1.84	2.4
SCRH74B-120□-PF	12	1	0.058	1.71	2.21
SCRH74B-150□-PF	15	1	0.081	1.47	2.09
SCRH74B-180□-PF	18	1	0.091	1.31	1.81
SCRH74B-220□-PF	22	1	0.11	1.23	1.73
SCRH74B-270□-PF	27	1	0.15	1.12	1.60
SCRH74B-330□-PF	33	1	0.17	0.96	1.36
SCRH74B-390□-PF	39	1	0.23	0.91	1.26
SCRH74B-470□-PF	47	1	0.26	0.88	1.18
SCRH74B-560□-PF	56	1	0.35	0.75	1.05
SCRH74B-680□-PF	68	1	0.38	0.69	1.04
SCRH74B-820□-PF	82	1	0.43	0.61	0.91
SCRH74B-101□-PF	100	1	0.61	0.6	0.75
SCRH74B-121□-PF	120	1	0.66	0.52	0.7
SCRH74B-151□-PF	150	1	0.88	0.46	0.65
SCRH74B-181□-PF	180	1	0.98	0.42	0.6
SCRH74B-221□-PF	220	1	1.17	0.36	0.55
SCRH74B-271□-PF	270	1	1.64	0.34	0.52
SCRH74B-331□-PF	330	1	1.86	0.32	0.47
SCRH74B-391□-PF	390	1	2.85	0.29	0.42
SCRH74B-471□-PF	470	1	3.01	0.26	0.38
SCRH74B-561□-PF	560	1	3.62	0.23	0.32
SCRH74B-681□-PF	680	1	4.63	0.22	0.3
SCRH74B-821□-PF	820	1	5.2	0.2	0.25
SCRH74B-102□-PF	1000	1	6.0	0.18	0.22

Note:

- (1). All test data is referenced to 25°C ambient.
- (2). Operating Temperature Range-25°C to +105°C.
- (3). DC current(A)that will cause an approximate Δ T of 40°C.
- (4). DC current(A)that will cause Lo to drop approximately 25%.
- (5). □ Tolerance of inductance:±10%(K)±20%(M)±30%(N)



SMD Power chokes- SCRH -B Series

Electrical Characteristics

Part Number	Inductance (μ H)	Test Frequency (KHz)	DC Resistance (Ω Max)	Rated current (A)Max	Itemp(A) Max
SCRH124B-100□-PF	10	100	0.028	4.50	4.10
SCRH124B-120□-PF	12	100	0.038	4.00	3.90
SCRH124B-150□-PF	15	100	0.05	3.20	3.50
SCRH124B-180□-PF	18	100	0.057	3.10	3.10
SCRH124B-220□-PF	22	100	0.066	2.90	3.00
SCRH124B-270□-PF	27	100	0.08	2.80	2.70
SCRH124B-330□-PF	33	100	0.097	2.70	2.43
SCRH124B-390□-PF	39	100	0.132	2.10	2.07
SCRH124B-470□-PF	47	100	0.16	1.90	1.87
SCRH124B-560□-PF	56	100	0.19	1.80	1.77
SCRH124B-680□-PF	68	100	0.22	1.50	1.60
SCRH124B-820□-PF	82	100	0.26	1.30	1.44
SCRH124B-101□-PF	100	100	0.308	1.20	1.36
SCRH124B-121□-PF	120	100	0.38	1.10	1.23
SCRH124B-151□-PF	150	100	0.53	0.95	1.16
SCRH124B-181□-PF	180	100	0.62	0.85	1.05
SCRH124B-221□-PF	220	100	0.7	0.80	0.95
SCRH124B-271□-PF	270	100	0.87	0.60	0.86
SCRH124B-331□-PF	330	100	0.99	0.50	0.78

Note:

- (1). All test data is referenced to 25°C ambient.
- (2). Operating Temperature Range-25°C to +105°C.
- (3). DC current(A)that will cause an approximate Δ T of 40°C.
- (4). DC current(A)that will cause Lo to drop approximately 25%.
- (5). □Tolerance of inductance:±10%(K)±20%(M) ±30%(N)



SMD Power chokes- SCRH -B Series

Electrical Characteristics

Part Number	Inductance (μ H)	Test Frequency (KHz)	DC Resistance (Ω Max)	Rated current (A)Max	Itemp(A) Max
SCRH125B-100□-PF	10	100	0.025	4.00	5.50
SCRH125B-120□-PF	12	100	0.027	3.50	5.22
SCRH125B-150□-PF	15	100	0.03	3.30	4.69
SCRH125B-180□-PF	18	100	0.034	3.00	4.22
SCRH125B-220□-PF	22	100	0.036	2.80	4.00
SCRH125B-270□-PF	27	100	0.051	2.30	3.24
SCRH125B-330□-PF	33	100	0.057	2.10	3.07
SCRH125B-390□-PF	39	100	0.068	2.00	2.76
SCRH125B-470□-PF	47	100	0.075	1.80	2.48
SCRH125B-560□-PF	56	100	0.11	1.70	2.23
SCRH125B-680□-PF	68	100	0.12	1.50	2.00
SCRH125B-820□-PF	82	100	0.14	1.40	1.80
SCRH125B-101□-PF	100	100	0.16	1.30	1.70
SCRH125B-121□-PF	120	100	0.17	1.10	1.60
SCRH125B-151□-PF	150	100	0.23	1.00	1.52
SCRH125B-181□-PF	180	100	0.29	0.90	1.44
SCRH125B-221□-PF	220	100	0.4	0.80	1.29
SCRH125B-271□-PF	270	100	0.46	0.75	1.16
SCRH125B-331□-PF	330	100	0.51	0.68	1.04
SCRH125B-391□-PF	390	100	0.69	0.65	0.93
SCRH125B-471□-PF	470	100	0.77	0.58	0.83
SCRH125B-561□-PF	560	100	0.86	0.54	0.74
SCRH125B-681□-PF	680	100	1.2	0.48	0.66
SCRH125B-821□-PF	820	100	1.34	0.43	0.59
SCRH125B-102□-PF	1000	100	1.53	0.40	0.53

Note:

- (1). All test data is referenced to 25°C ambient.
- (2). Operating Temperature Range-25°C to +105°C.
- (3). DC current(A)that will cause an approximate Δ T of 40°C.
- (4). DC current(A)that will cause Lo to drop approximately 25%.
- (5). □Tolerance of inductance:±10%(K)±20%(M) ±30%(N)



SMD Power chokes- SCRH -B Series

Electrical Characteristics

Part Number	Inductance (μ H)	Test Frequency (KHz)	DC Resistance (Ω Max)	Rated current (A)Max	Itemp(A) Max
SCRH127B-100□-PF	10	100	0.0216	5.40	5.70
SCRH127B-120□-PF	12	100	0.0243	4.90	5.10
SCRH127B-150□-PF	15	100	0.027	4.50	4.85
SCRH127B-180□-PF	18	100	0.0392	3.90	4.36
SCRH127B-220□-PF	22	100	0.0432	3.60	4.00
SCRH127B-270□-PF	27	100	0.0459	3.40	3.60
SCRH127B-330□-PF	33	100	0.0648	3.00	3.25
SCRH127B-390□-PF	39	100	0.0729	2.75	2.91
SCRH127B-470□-PF	47	100	0.1	2.50	2.62
SCRH127B-560□-PF	56	100	0.11	2.35	2.35
SCRH127B-680□-PF	68	100	0.14	2.10	2.23
SCRH127B-820□-PF	82	100	0.16	1.95	2.00
SCRH127B-101□-PF	100	100	0.22	1.70	1.80
SCRH127B-121□-PF	120	100	0.25	1.60	1.70
SCRH127B-151□-PF	150	100	0.28	1.42	1.60
SCRH127B-181□-PF	180	100	0.35	1.30	1.52
SCRH127B-221□-PF	220	100	0.39	1.16	1.44
SCRH127B-271□-PF	270	100	0.56	1.06	1.36
SCRH127B-331□-PF	330	100	0.64	0.95	1.22
SCRH127B-391□-PF	390	100	0.7	0.88	1.03
SCRH127B-471□-PF	470	100	0.98	0.79	0.92
SCRH127B-561□-PF	560	100	1.07	0.73	0.83
SCRH127B-681□-PF	680	100	1.46	0.67	0.75
SCRH127B-821□-PF	820	100	1.64	0.60	0.68
SCRH127B-102□-PF	1000	100	182	0.55	0.61

Note:

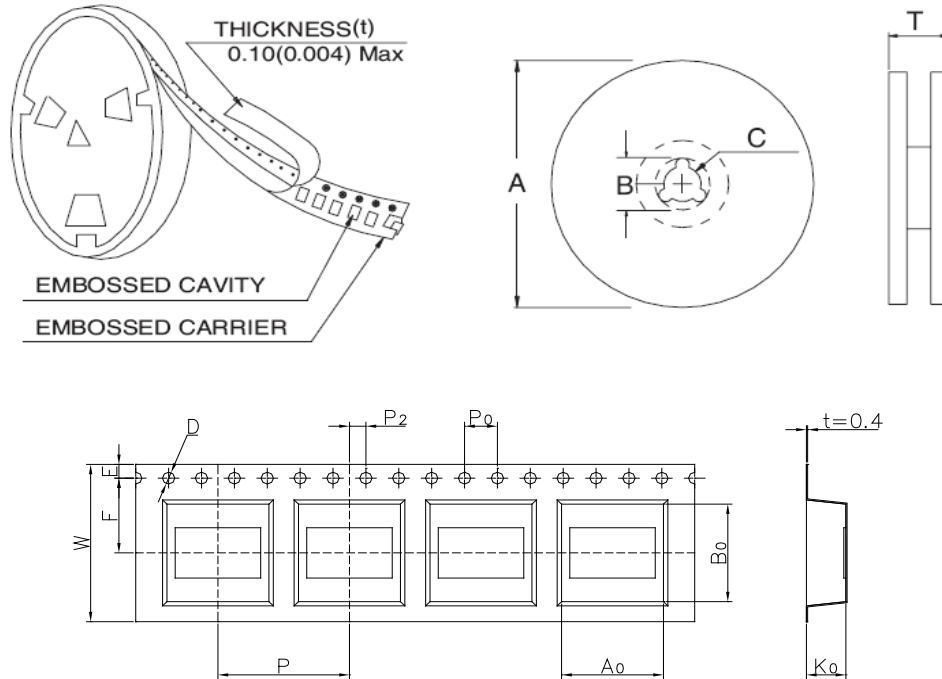
- (1). All test data is referenced to 25°C ambient.
- (2). Operating Temperature Range-25°C to +105°C.
- (3). DC current(A)that will cause an approximate Δ T of 40°C.
- (4). DC current(A)that will cause Lo to drop approximately 25%.
- (5). □Tolerance of inductance:±10%(K)±20%(M)±30%(N)



SMD Power chokes- SCRH -B Series

PACKAGING

1.Configuration.



2.Dimension in mm

TYPE	A	B	C	T
12mm	330	100	21±0.8	16.4
16mm	330	100	21±0.8	20.4
24mm	330	100	21±0.8	28.4
32mm	330	100	21±0.8	36.4

TYPE	Ao(mm)	Bo(mm)	Ko(mm)	W(mm)	P(mm)	PCS/REEL
SCRH62B	6.5±0.1	6.3±0.1	3.5±0.1	16±0.3	12±0.1	1000
SCRH64B	6.5±0.1	6.3±0.1	5.5±0.1	16±0.3	12±0.1	1000
SCRH73B	7.85±0.1	7.85±0.1	3.5±0.1	16±0.3	12±0.1	1000
SCRH74B	7.85±0.1	7.85±0.1	4.5±0.1	16±0.3	12±0.1	1000
SCRH124B	12.6±0.1	12.6±0.1	5.2±0.1	24±0.3	16±0.1	500
SCRH125B	12.6±0.1	12.6±0.1	6.2±0.1	24±0.3	16±0.1	500
SCRH127B	12.6±0.1	12.6±0.1	8.2±0.1	24±0.3	16±0.1	500