

## SMD Power chokes- SNR2012-SERIES

### Features

1. This specification applies Low Profile Power Inductors
2. 100% Lead(Pb) & Halogen-Free and RoHS compliant.

### Applications

Smartphones, tablets and wearable devices  
DSC, camcorders  
DC / DC converters, etc.

### Product Identification

#### SNR 2012 B -100M-TQ

SNR: SERIES NAME

2410: DIMENSION SIZE CODE

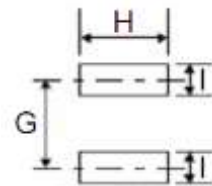
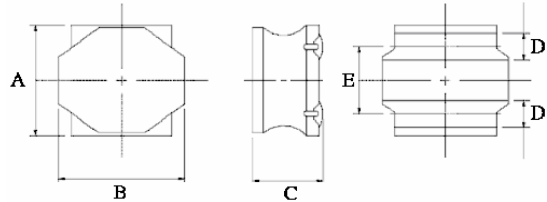
A: CORE TYPE

100: INDUCTANCE CODE.

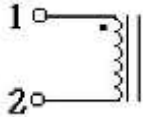
M: TOLERANCE, K=10% M=20%, ±30%(N)

TQ: Material CODE

### Dimensions (mm)



### SCHEMATIC



Series	A(mm)	B(mm)	C(mm)	D(mm)	E(mm)
SNR2012B/C	2.0±0.1	2.0±0.1	1.2 max.	0.5±0.2	1.25±0.2

G(mm)	H(mm)	I(mm)
1.35 ref.	2.0 ref.	0.65 ref.

SUNLEI Part Number	Inductance (uH)	Tolerance (%)	Test Frequency (Hz)	DCR (Ω) ±20%	I sat (A)	I rms (A)
SNR2012B-1R0Y-TQ	1	±30%	1V100K	0.07	1.9	1.7
SNR2012B-1R5Y-TQ	1.5	±30%	1V100K	0.09	1.65	1.5
SNR2012B-2R2M-TQ	2.2	±20%	1V100K	0.107	1.35	1.37
SNR2012B-3R3M-TQ	3.3	±20%	1V100K	0.19	1	1.02
SNR2012B-4R7M-TQ	4.7	±20%	1V100K	0.241	0.9	0.91
SNR2012C-1R0Y-TQ	1	±30%	1V100K	0.073	2.2	1.65
SNR2012C-1R5Y-TQ	1.5	±30%	1V100K	0.1	1.8	1.4
SNR2012C-2R2M-TQ	2.2	±20%	1V100K	0.129	1.6	1.2
SNR2012C-3R3M-TQ	3.3	±20%	1V100K	0.227	1.25	0.9
SNR2012C-4R7M-TQ	4.7	±20%	1V100K	0.325	1.1	0.75

Note:

1. Isat: Based on inductance change ( $\Delta L/L_0: \leq -30\%$ ) @ ambient temp. 25°C Irms:
2. Based on temperature rise ( $\Delta T: 40^\circ\text{C}$ ) Max